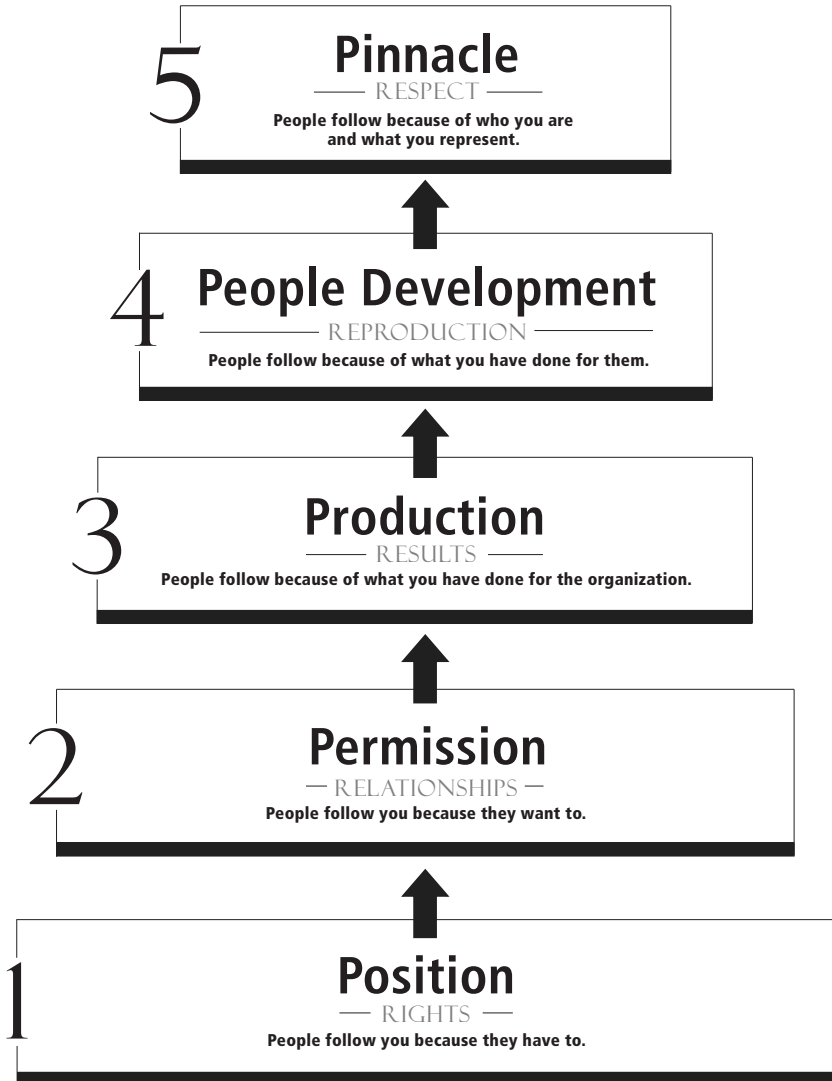


# 5 Levels Of Leadership Assessment Tool

## Leadership



# Overview of the 5 Levels of Leadership



---

# Leadership Assessment

---

## *How to Gauge Your Current Level of Leadership*

This is a four-part questionnaire to help you understand where you are in the leadership journey related to the 5 Levels. I want to encourage you to stop moving forward in the book and immediately spend the time required to assess your current level. Completing parts 1 and 2 should not require a large investment of your time. Part 3 may take a bit longer, since it involves other people, but please get that started, too. Its main purpose is to verify whether your instincts and self-perception are correct in Part 2. Part 4 will give you insight into where you stand overall with your team and should be done after you've completed parts 1, 2, and 3.

If you do this groundwork, you will be in a much better position to grow in your leadership as you read and work through the remainder of the book.

# Part 1 — Leadership Level Characteristics

**T**his first section applies to your leadership in general. Please read the following ten statements. Place a check mark next to each one that you agree is true for you. Answer using your first instinct. Please do not skip any questions, and do not go back and change any of your responses.

## Level 1

- I don't have to remind the people who work for me that I am the leader.
- I think of each person who works for me as an individual person, not just in terms of his or her function or role.
- Most days I look forward to going to work.
- I recognize that the position I've been given is an opportunity to learn, not turf to be guarded.
- The people who work for me are willing to do work above and beyond their job descriptions.
- I know that dealing with people problems is a part of leading and have accepted that as part of the job.
- I possess the desire to learn more about leadership and become a better leader.
- I think of my job in terms of work to be accomplished and give very little focus to career path and the positions I desire to achieve along the way.
- One of my primary objectives is to assist the people who work for me.
- Most people find it easy to work with me.

## LEADERSHIP ASSESSMENT

If you marked eight or more of the previous statements as true for you, then you have probably already established yourself as a leader on Level 1 and have begun to move to the higher levels. Move on to the next section of the test. However, if you checked fewer than eight, then you have probably not yet mastered Level 1, and this is where you will probably begin your work in personal leadership development. Why? Because you are only as good as the lowest level you've mastered.

### Level 2

- People outside of my department or area of responsibility respect my opinions and frequently seek me out for advice.
- I know my strengths and weaknesses and rarely get blindsided in my work.
- I genuinely like most people and want to help them.
- I am very consistent and even-tempered in my interaction with the people who work for me.
- When I say something to the people on my team, they always know they can count on it because I am trustworthy.
- I have developed solid relationships with all of the people who work for me.
- The people who work with me find me likable and pleasant nearly 100 percent of the time.
- When I need to have a candid conversation with team members to correct errors or take care of problems, I follow through and don't allow too much time to go by.
- I believe that employees desire more than just a fair day's pay for a fair day's work; most desire encouragement and I give it to them.
- I have developed relationships with everyone who works for me.

If you marked eight or more of the above statements as true for you, then move on to the next section. If not, you may want to save the

## THE 5 LEVELS OF LEADERSHIP

rest of Part 1 of the test for later because your answers indicate that you've not yet mastered Level 2 and you don't yet think like a Level 2 leader. If you do decide to complete Part 1 at this time, please be aware that even if you mark eight or more statements true in subsequent sections, you cannot be on the higher levels of leadership because you have not yet won Level 2. This also applies as you answer the questions in subsequent levels.

### Level 3

- I consistently hit targets and goals in my work.
- Good people always want to work with me and my team.
- People see me as an expert in my field and seek me out to learn from me.
- I am constantly setting and achieving higher goals for myself, even when my superiors don't set them for me.
- My performance in my work often carries the team to a higher level.
- I give my best to whatever I do.
- I am comfortable with the idea that others are watching how I perform and follow my example.
- I am known as a problem solver, and I often get difficult tasks done.
- My work is very consistent on a daily basis.
- I have systems and routines that help me perform at a very high level.

If you marked eight or more of the above statements as true for you, then move on to the next section. If not, your answers indicate that you've not yet mastered Level 3 and you don't yet think like a Level 3 leader.

### Level 4

- I schedule and follow through with training and development for all the members of my team on a regular, consistent basis.
- When deadlines loom or work becomes urgent, we never cancel our training and development sessions.
- I consistently take risks by giving people responsibilities and authority that will stretch them.
- I spend a significant amount of time every month mentoring up-and-coming leaders.
- I know very thoroughly the strengths and weaknesses of all the people I lead.
- I individualize the way I train, develop, and mentor my people.
- I spend the most strategic and significant mentoring time with the people who have the highest capacity, talent, and potential.
- I have a history of moving people from position to position to help find their fit.
- I am continually giving people feedback, not just during formal reviews.
- My team or department is considered by others to be the best trained (or one of the best) in the organization.

If you marked eight or more of the above statements as true for you, then move on to the next section. If not, your answers indicate that you've not yet mastered Level 4 and you don't yet think like a Level 4 leader.

### Level 5

- I can name several specific people whom I have encouraged to speak hard truths to me, and they do so regularly.
- I am using my influence to instill values in my organization.

## THE 5 LEVELS OF LEADERSHIP

- The course of my organization is set by me or by a team of which I am a part.
- I have developed many leaders who are developers of leaders.
- I enjoy the interaction and friendship of a small circle of leaders with whom I am taking the leadership journey.
- I am still at the top of my game, and the positive impact I am making is strong.
- I can name at least one person who would be ready to step in and take my place should I decide to leave my current position.
- I have influence outside of my organization.
- People from outside of my specific industry seek me out for leadership advice.
- I am using my influence and resources for causes greater than myself or my organization.

In leadership, you are only as good as the lowest level you've mastered. So I just want to remind you that even if you scored highly in one of the higher levels, if you scored poorly on a lower level, your leadership is actually on that lower level. That is where you will need to give your attention when working with people to improve your leadership ability.



## **Part 2 — Individual Team Member Assessment — Leader's Point of View**

**F**or each person you oversee directly (direct reports), please answer yes or no to the questions on the following worksheet. (Be sure to complete Part 2 before moving on to Part 3.)

## INDIVIDUAL TEAM MEMBER ASSESSMENT

Name of Team Member:

Date:

---

### Level 1

- Yes No This person acknowledges you as his or her leader.
- Yes No This person would agree that you are suited for the leadership position you hold.
- Yes No This person would acknowledge that you see your position as an opportunity to earn your place at the leadership table, not as a privilege to be used for personal advancement.

### Level 2

- Yes No You know things about this person's family and personal life outside of his or her work.
- Yes No You know this person's strengths and weaknesses.
- Yes No You know this person's hopes and dreams.
- Yes No You are committed to helping this person succeed in his or her work.
- Yes No This person trusts you and you trust him or her.

### Level 3

- Yes No This person respects your professional ability and qualities.
- Yes No This person asks for your advice and expertise.
- Yes No This person has become more productive because of your influence.
- Yes No This person would acknowledge that the team is more productive because of your leadership.
- Yes No This person would agree that your team contributes to the vision and purpose of the organization.

## INDIVIDUAL TEAM MEMBER ASSESSMENT (*continued*)

### Level 4

- Yes No You have given this person specific training that has helped him or her to perform better.
- Yes No You have mentored this person or put him or her in a development process that has helped him or her to become a better leader.
- Yes No This person is now leading others because you have given opportunities and training for him or her to lead.
- Yes No This person is consistently loyal and supportive, and always gives you the benefit of the doubt.

### Level 5

- Yes No This person is not only leading others but has trained those he or she leads to develop leaders thanks to your input.
- Yes No This person could step into your role with a very high probability of success if you were to step down.
- Yes No This person is your advocate and champions you with other leaders so that you gain others' respect even before you meet them.

## THE 5 LEVELS OF LEADERSHIP

### EVALUATION

You can learn two things from this assessment: First, you can understand where you are with each person on the 5 Levels of Leadership based on your answers. If you answered *no* more times than *yes* in a section, then you have not gotten to that level with that person. (Instead, you would be on the level below that one.)

The second thing you can learn is where you need to work to improve. A *no* answer to any statement indicates where you need to do some work.

## Part 3—Leadership Assessment— Team Member’s Point of View

**A**sk each of the people who report directly to you to fill out the following worksheet for you. They may do so anonymously if they wish. Use the same criteria for evaluating this assessment as you used to evaluate the Part 2 assessment you completed.

Note that even if you are a very good leader, you may have an employee or volunteer who refuses to put you anywhere but Level 1. You can try to win over that person on Level 2 and then progress, but there are no guarantees that the person will allow him- or herself to be won over.

## LEADERSHIP ASSESSMENT

**Name of Leader:**

**Date:**

---

Please read each statement and respond with yes or no in reference to the leader whose name is listed above. There are no right or wrong answers. This assessment is designed only to describe your interaction with the person. (If you wish, you may answer this assessment anonymously.)

### Level 1

- Yes No You acknowledge this person as your leader.
- Yes No This person is well-suited for the leadership position he or she holds.
- Yes No This person treats the leadership position as an opportunity to earn a place at the leadership table, not as a privilege to be used for personal advancement.

### Level 2

- Yes No This leader cares about your family and personal life outside of work and regularly asks you questions about them.
- Yes No This leader knows your strengths and weaknesses.
- Yes No This leader knows and respects your hopes and dreams.
- Yes No This leader is committed to helping you succeed in your work.
- Yes No You trust this leader and he or she trusts you.

### Level 3

- Yes No You respect this leader's professional ability and qualities.
- Yes No You rely on his or her advice and expertise.

## LEADERSHIP ASSESSMENT (*continued*)

- Yes No You have become more productive because of this leader's influence.
- Yes No The team you are part of is more productive because of his or her leadership.
- Yes No You and the team you are part of contribute to the vision and purpose of the organization.

### Level 4

- Yes No You have received specific training from this leader that has helped you to perform better.
- Yes No This leader has mentored or developed you to help you become a better leader.
- Yes No You are currently leading others as a result of opportunities and training given to you by this leader.
- Yes No You believe in this leader and automatically give him or her the benefit of the doubt.

### Level 5

- Yes No You are training and developing other leaders thanks to the input from and influence of this leader.
- Yes No You could step into your leader's role with a very high probability of success because he or she has helped to prepare you for it.
- Yes No This leader has changed your life, and you are an advocate who champions him or her with other leaders.

Once you have completed the assessment, please return this document to the leader listed at the top of the page.

## Part 4—Current Leadership Level Assessment

	Part 1 # True	Part 2 # On Each Level	Part 3 # On Each Level	Predominant Level
Level 1				
Level 2				
Level 3				
Level 4				
Level 5				

You can gain a “snapshot” of your leadership by doing the following:

1. In the column labeled Part 1, record the number of statements you agreed with as true in each section of the assessment.
2. In the column labeled Part 2, record the number of your team members who are on each level with you based on your assessment of them.
3. In the column labeled Part 3, record the number of people who put you on each level according to their answers to the statements.
4. Now add the lines across. Which level of leadership has the highest number? More than likely, the one with the highest number indicates your current level of leadership with the majority of



people on your team. (This isn't meant to be scientifically valid. It's simply a tool to give you insight into yourself.)

Keep this assessment in mind as you move through the book. The Guide for Growth at the end of each section of the book will help you to improve your leadership skills and move up to the higher levels of leadership with your people.